

Hyrlo manual

version 02.23/08/18

Thank you for choosing [knob.farm](https://www.knob.farm) Hyrlo!

Hyrlo is a high quality audio mixing module. If used as a standalone, Hyrlo can mix up to 3x stereo pairs or up to 6x mono channels or combine mono and stereo in various ways. Using bus connectors multiple Hyrlo modules can be chained in series to create larger mixer and internal routing between modules.

Hyrlo (River mouth – Ukrainian) the place where numerous sound streams flow into one mix in the same way as rivers meet and flow into the sea.

The design of the panel is symmetrical. Panel can be flipped backwards to change the pattern on the river's golden silhouette.

Installation

Turn off your modular system before installing. Connect 10-pin cable header to module power connector red stripe down (-12V is labeled with white flat line on the PCB). Connect other 16-pin cable header to power distribution board according to instructions of your case's power supply. Mount module to the rails in your case and fixate it with the screws. Turn on your modular system, you are ready to use Hyrlo.

Usage

Thanks to its compact design and quality analog circuit, hyrlo is ideal for use in live performances and studio tasks. Hyrlo has an ultra low noise level, very low harmonic distortion and almost linear frequency response over the entire frequency range, which provides clear and transparent sound mix. Hyrlo is designed for audio and has AC-coupled circuitry that prevents DC voltage injecting into audio signal. Hyrlo's quality attenuators with customized response curves provide smooth and natural signal volume change. LED indicators display signal status for each channels pair. L channel is normalised to R channel, so you can use mono sources for mixing with stereo signal using only left L input.

Variations of signal summing

3x stereo, 2x stereo + 1 monox, 1 stereo + 2x monox, 1 up to 6x mono sources (for single module usage)

Module specifications:

- Width: 4 hp
- Depth: 24mm× (mk I) / 32mm (mk II)
- Current draw max: 40mA +/-12Vx
- Reverse power protection

Specifications can be changed without notice.x

Difference between Hyrlo and Hyrlo mk II versions.

Hyrlo mk II version consists of two pcb boards and has EXT. bus connectors for creating daisy chain connection between modules. Hyrlo mk II also have 3 micro switches to configure daisy chain signal behaviour and 6x mono settings.

6x mono

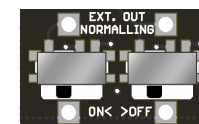
When using a single Hyrlo module, make sure that the 6x mono switch on back panel is set to the position opposite to the caption. In this case Hyrlo can be used as a mixer of mono signals only. This way each pair of L and R inputs shares a single attenuator knob, R output has the mono mixing sound and L output is left blank.

Daisy chaining multiple modules

Multiple Hyrlo modules can be chained together to create bigger mixer or sub groups. Hyrlo can connect with [Ferry](https://www.knob.farm) modules to create internal connection. If you want to use daisy chaining make sure that "6x mono" switch on back panel is set to the position opposite to the "EXT." caption. Please connect the chain cable so that wires of the same color are always on the same side for EXT.OUT and EXT.IN.

EXT.IN receives audio signal from EXT.OUT of another module and sends it to OUTs. OUTs are normalised to EXT.OUT.

There are switches on the back panel which determine OUT behaviour. If they are all set to the left ("ON<") OUTs are normalised and if you insert patch cables to OUTs you will interrupt daisy chaining. If you want a signal to be uninterrupted set the switches to the right position ">OFF".



Warranty

knob.farm gives full two year warranty from the date of purchase. The warranty does not apply to modules with visible signs of wear and tear as well as to damages due to abusive working conditions, wrong power supply voltages or improper shipping and handling.



web: [knob.farm](https://www.knob.farm)x

support: support@knob.farmx

social: [facebook.com/knob.farm](https://www.facebook.com/knob.farm)

All rights reserved. Copyright © 2018 knob.farm

If you like our product, please support knob.farm by rating the module on modulargrid.com.

6x MONO | EXT.

6x MONO | EXT.